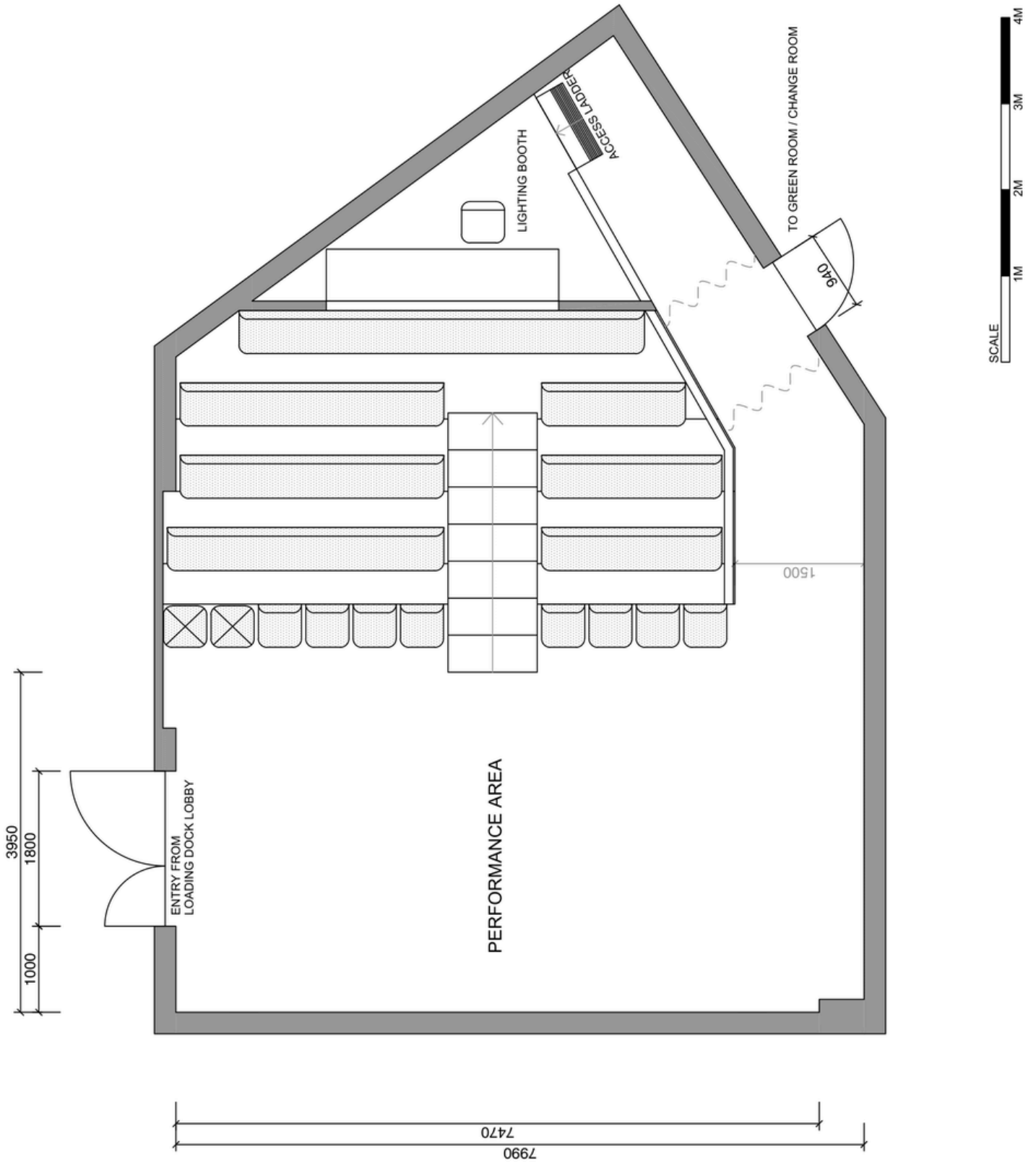





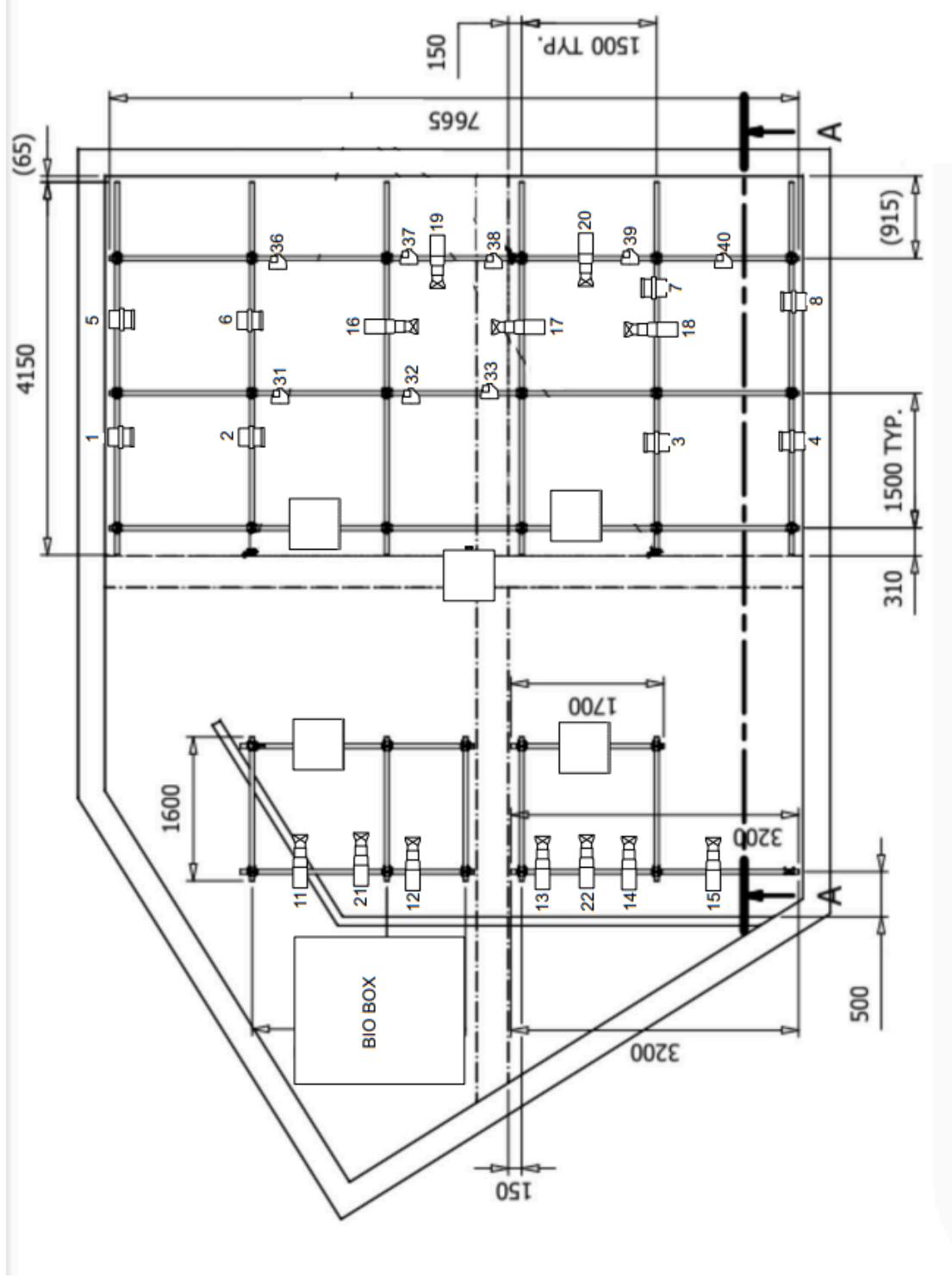


Loading Dock Theatre: Floor Plan



Loading Dock Theatre: Standard Rig

EQUIPMENT LIST	
12 x ETC Colour Source Spot 20/50 Zoom (PROFILE)	
8 x ETC Colour Source Fresnel WITH Barn Doors	
10 x Event LED Parcan	
ETC ION XE Lighting Board	
KEY	
 ETC Colour Source Spot 20/50 Zoom (PROFILE)	
 ETC Colour Source Fresnel WITH Barn Doors	
 Event LED Parcan	
 QSC K10s Speaker	
 EPSON EB L735U PROJECTOR	
CHANNELS	
1 - 8 FRESNEL	
11 - 22 PROFILE	
31 - 40 PARCAN (missing 35)	
1001 - HOUSE (SEATS)	
1002 - HOUSE (STAGE)	
LOADING DOCK STANDARD RIG	
LIGHTING PLAN	
DESIGNED BY: John Buckley DRAWN BY: Capri Harris VENUE: OTOPIA Sydney DATE UPDATED: 7/05/2024	



The Substation: Floor Plan

